

Get Involved

FDOT remains committed to working with all project stakeholders. There are many ways to provide comments:

- Give a formal statement during tonight's comment period.
- Complete a written comment form and drop it in the comment box provided tonight.
- Mail or email your comments to the Project Manager at the address provided below.

To View Tonight's Materials Online, visit our website at:

www.nflroads.com/TimucuanTrail

For More Information Contact:

Craig Teal, P.E., Project Manager
Florida Department of Transportation
1109 S. Marion Avenue, MS 2002
Lake City, FL 32025-5874
(386) 961-7703 or (800) 749-2967 ext. 7703
Email: craig.teal@dot.state.fl.us

Florida Department of Transportation

Public Information Meeting

Timucuan Trail Projects

Tuesday, September 29, 2015

Ribault Club

11241 Fort George Road
Jacksonville, FL 32226

The Florida Department of Transportation would like to welcome you to a Public Information Meeting regarding the proposed improvements to the Ft. George Island project area in Jacksonville, Duval County, Florida.

Meeting Agenda:

Open House: 4:30—6:30 PM (Review displays, talk one-on-one with staff)

Public Comment Period: 6:30 PM

Follow Us On



MyFDOTNEFL



MyFDOT_NEFL



MyFDOTNEFL

Public participation is sought without regard to race, color, religion, sex, age, national origin, disability or family status.



Timucuan Trail—From Shad Creek Bridge to Ft. George Trailhead
Financial Project ID: 434014-1
 Project begins at the Shad Creek Bridge and will connect with the Ft. George Trailhead. A 10 foot asphalt multi-use trail will be constructed on the east side of SR-A1A.
Cost: \$553,000
Under Construction



Timucuan Trail—Ft. George Trailhead
Financial Project ID: 408494-3
 A new Ft. George Island entrance road and new adjacent multi-use trail will be constructed through the Batten Island area.
Cost: \$2.8 Million
Not Funded for Construction



Batten Island Wetland Restoration
Financial Project ID: 408494-5
 Restoration of the Saltwater Marsh Wetland Area on Batten Island
Cost: \$970,000
Construction: 2016



Timucuan Trail—From Ft. George Trailhead to Huguenot Park
Financial Project ID: 434028-1
 Project begins at the Ft. George Trailhead and ends north of Huguenot Park. A 10 foot wide asphalt multi-use trail will be extended for approximately 2200 feet along the east side of SR-A1A and will continue over Haulover Creek by a parallel 220 foot long bridge.
Cost: \$1.9 Million
Not Funded for Construction



Timucuan Trail— From Huguenot Park to Ft. George River
Financial Project ID: 433164-1
 Project begins in Huguenot Memorial Park and connects to the existing trail on the Ft. George River bridge. This trail provides a 12 foot wide paved trail adjacent to the east side of SR-A1A.
Cost: \$8 Million
Not Funded for Construction



Timucuan Trail—From Ft. George River to Little Talbot Island
Financial Project ID: 433164-2
 Project begins at the Ft. George River Access Parking Lot and connects to the existing Little Talbot Island State Park Trail head. This trail provides a 12 foot wide paved trail adjacent to SR-A1A.
Cost: \$2.3 Million
Construction : 2016



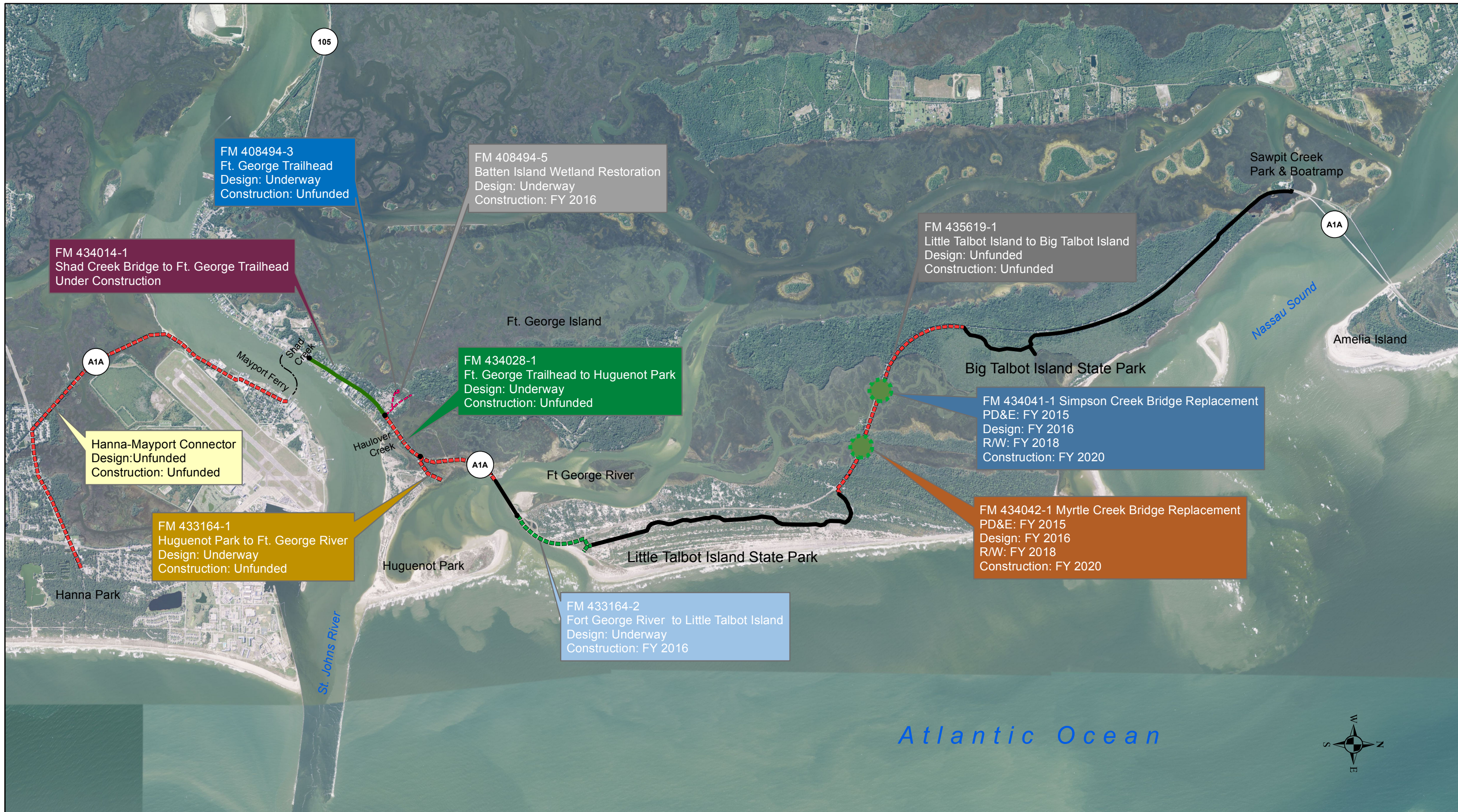
SR-A1A/SR-105 (Heckscher Dr) at Myrtle Creek Bridge #720071
Financial Project ID: 434042-1
 A new bridge will be constructed on SR-A1A/SR 105 (Heckscher Dr) over Myrtle Creek. This bridge will provide two 12 foot travel lanes, 8 foot shoulders on both sides of the roadway, and a 10 foot paved multi-use trail on the east side.
Cost: \$3.4 Million
Construction: 2020



SR-A1A/SR-105 (Heckscher Drive) at Simpson Creek Bridge #720072
Financial Project ID: 434041-1
 A new bridge will be constructed on SR-A1A/SR-105 (Heckscher Dr) over Simpson Creek. The bridge will provide two 12 foot travel lanes, 8 foot shoulders on both sides of the roadway and a 10 foot paved multi-use trail on the east side.
Cost: \$3.7 Million
Construction: 2020



Timucuan Trail—From Little Talbot Island to Big Talbot Island
Financial Project ID: 435619-1
 Project begins at the Little Talbot Island State Park Entrance and ends at the Big Talbot Island Trailhead. A 10 foot wide asphalt multi-use trail will be constructed on the north side adjacent to SR-A1A .
Cost: \$1.5 Million
Not Funded for Construction



FM 408494-3
Ft. George Trailhead
Design: Underway
Construction: Unfunded

FM 408494-5
Batten Island Wetland Restoration
Design: Underway
Construction: FY 2016

FM 434014-1
Shad Creek Bridge to Ft. George Trailhead
Under Construction

FM 435619-1
Little Talbot Island to Big Talbot Island
Design: Unfunded
Construction: Unfunded

Hanna-Mayport Connector
Design: Unfunded
Construction: Unfunded

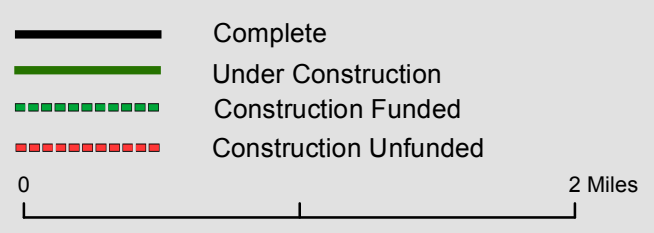
FM 434028-1
Ft. George Trailhead to Huguenot Park
Design: Underway
Construction: Unfunded

FM 434041-1 Simpson Creek Bridge Replacement
PD&E: FY 2015
Design: FY 2016
R/W: FY 2018
Construction: FY 2020

FM 433164-1
Huguenot Park to Ft. George River
Design: Underway
Construction: Unfunded

FM 434042-1 Myrtle Creek Bridge Replacement
PD&E: FY 2015
Design: FY 2016
R/W: FY 2018
Construction: FY 2020

FM 433164-2
Fort George River to Little Talbot Island
Design: Underway
Construction: FY 2016



Timucuan Trail Segments

State Road A1A
Duval County, Florida

Subject to Change
Last Updated 09/23/2015

NO WARRANTIES: The information provided is made available by the Florida Department of Transportation on an "as is," "as available" basis without warranties of any kind, express or implied. This information cannot be identified as data, documentation, images, or otherwise that has been approved by the Florida Department of Transportation for any use whatsoever.

DISCLAIMER OF LIABILITY: The user of this information and data assumes all responsibility and risk for the use of both. Under no circumstances, including negligence, shall the Florida Department of Transportation, its employees, or consultants be liable for any DIRECT, INDIRECT, INCIDENTAL, SPECIAL, EXEMPLARY or CONSEQUENTIAL DAMAGES, or LOST PROFITS that result from the use, misuse or inability to use the application and data. Nor shall the Florida Department of Transportation, or its employees be liable for any damages resulting from or related to reliance; mistakes, omissions, interruptions, deletion of files, computer viruses, errors, defects, or any failure of performance, communications failure, theft, destruction or unauthorized access to the application and data.

